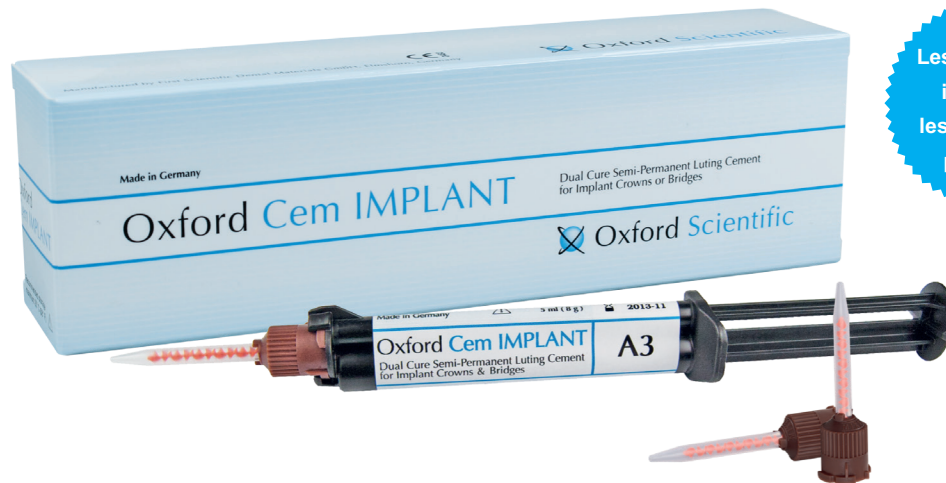


Oxford Cem IMPLANT

Introducing Oxford Cem IMPLANT.
Semi-permanent cement for crowns & bridges on implants.



Good retention but easy to remove? Yes, Oxford Cem IMPLANT can!

Unique Semi-permanent Luting Cement for Crowns and Bridges on Implants. Oxford Cem IMPLANT is a dual cure semi-permanent luting cement. Oxford Cem IMPLANT is based on multifunctional methacrylic esters and contains zinc. Oxford Cem IMPLANT is suitable for semi-permanent cementing of implant abutment retained crowns and bridges. It shows good elastic behavior and good seal because it is specially formulated to controlled slight expansion. Oxford Cem IMPLANT does not influence the setting of resin-based filling and luting materials. The zinc oxide is known for its good antibacterial properties. No bonding, priming or etching is required. Easy to remove and re-cement if needed, excess material can be easily removed. Does not react with implant materials and is the best cleanup that you experience.

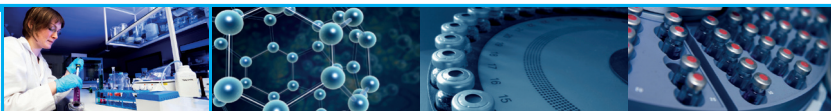
Features and Benefits

Features

- Controlled slight expansion and low film thickness
- Dual cure
- Elastic and shock absorbing properties
- No bonding, priming or etching
- Convenient gel stage
- Optimised tooth-coloured translucency
- Eugenolfree
- Contains zinc oxide

Benefits

- Safe fixation, excellent marginal seal
- Fast positioning with command set
- Reduces bone stress & gives more comfort to patient
- Removable clean and easy to re-cement
- Easy removal of excess material
- Esthetic results of high quality
- Compatible with other materials
- Zinc is known for good antibacterial properties

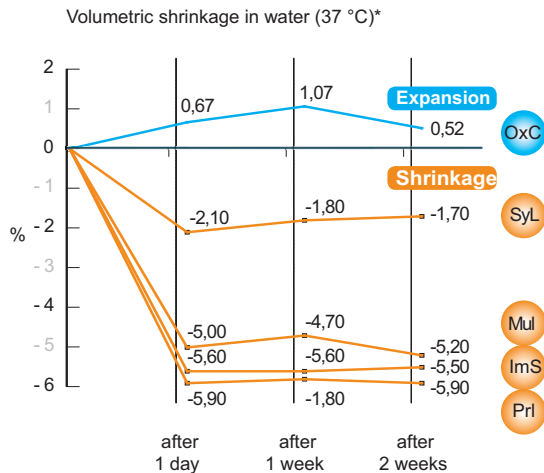


Oxford Cem IMPLANT

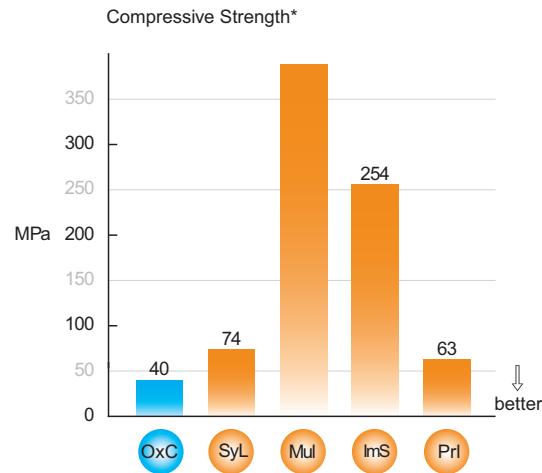
Oxford Cem IMPLANT: Low stress

Oxford Cem IMPLANT allows a perfect fixation of the restoration on the implant by a small and controlled expansion. At the same time crowns and bridges can be removed easily because of the very low compressive strength and optimal elastic behaviour of the material. Delivered in an automix double syringe, it is a reliable and convenient product.

Oxford Cem IMPLANT: Controlled expansion



Lower strength, better shock absorbing, high elasticity



- OxC - Oxford Cem IMPLANT
- ImS - Implantlink Semi (Detax)
- PrI - Premier Implant Cement (Premier Dental)
- Mul - Multilink Implant (Ivoclar Vivadent)
- SyL - Systemp. link (Ivoclar Vivadent)

* Data available upon request
Source: Oxford Scientific R&D 2019

Ordering Information

Oxford Cem IMPLANT, semi-permanent cement for crowns & bridges on implants

Part Number	Article
12-008	5 ml / 8 g Oxford Cem IMPLANT Minimix 4:1 10 x Oxford Mix TIP(S) for Minimix 4:1 / 10:1, Long

Error and omissions excluded. The Oxford Scientific products are only to be used by dentists and for its intended use. Please read these instructions for use carefully

Space for you

 Oxford Scientific

Made in Germany by First Scientific Dental Materials GmbH