

# Oxford Flo CEM

Introducing Oxford Flo CEM.  
Dual Cure Flowable Composite Cement.



High strength,  
low film  
thickness

Strong, Reliable, Versatile and Easy-to-use!

Oxford Flo CEM is a very reliable dual cure composite cement for inlays, onlays, crowns & bridges and posts. With its excellent mechanical and handling properties it allows perfectly fitting and durable luting of crowns, bridges, inlays and onlays. Oxford Flo CEM can be used with all dual cure adhesives (Oxford Bond SE Dual, Oxford Bond TE Dual).

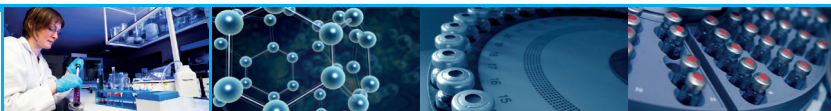
## Features and Benefits

### Features

- Dual cure resin cement
- Very good mechanical strength
- Optimal viscosity
- Minimax delivery system
- Low film thickness
- Zero expansion
- Radiopaque

### Benefits

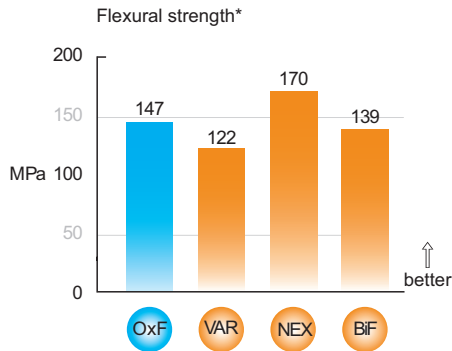
- Convenient placement and setting in direct or indirect techniques
- Ideal for inlays, onlays, crowns, bridges and posts
- Easy removal of excess
- Strong retention
- Excellent handling, ensures precise placement
- Consistent and homogenous mixing
- Greater convenience
- Easy placement & excellent fit of indirect restorations as crowns, bridges, inlays and onlays
- Easy diagnosis



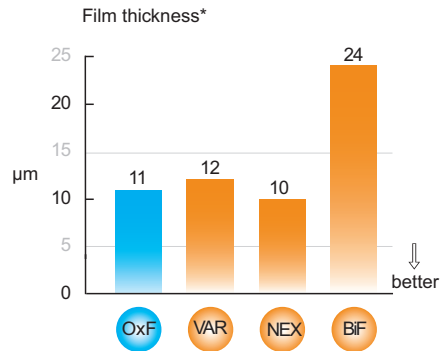
# Oxford Flo CEM

Oxford Flo CEM is Strong, Reliable and Easy-to-use

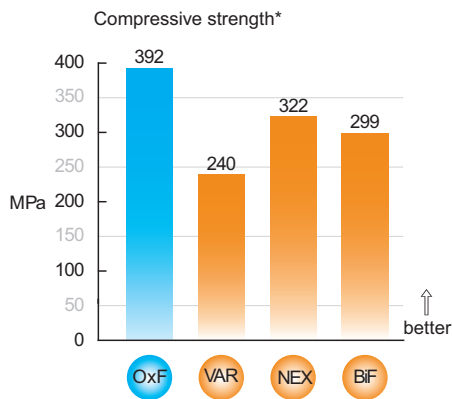
## Oxford Flo CEM gives Stability!



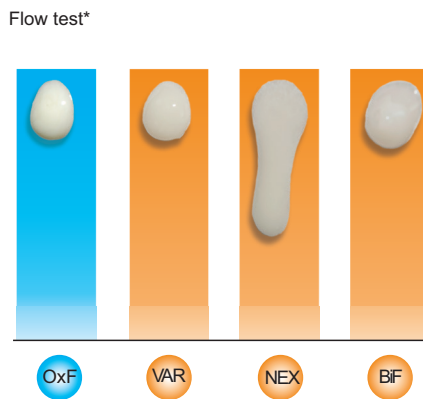
## Oxford Flo CEM: Optimal Adaptation!



## Oxford Flo CEM: Strong and Rigid!



## Oxford Flo CEM: Optimal Consistency!



— OxF - Oxford Flo CEM

— VAR - Variolink II (Ivoclar Vivadent)

— NEX - Nexus II (Kerr)

— BiF - Bifix QM (VOCO)

\* Data available upon request

Source: Oxford Scientific R&D 2019

## Ordering Information

### Oxford Flo CEM, Dual Cure Flowable Composite Cement

Includes: 5 ml / 9 g Oxford Flo CEM Minimix 1:1 | 5 x Oxford Mix TIP(S) for Minimix 1:1, Black

**Part Number**     **Article**

12-005A3     Oxford Flo CEM Shade A3

Error and omissions excluded. The Oxford Scientific products are only to be used by dentists and for its intended use. Please read these instructions for use carefully

Space for you

 Oxford Scientific

Made in Germany by First Scientific Dental Materials GmbH