

Oxford Glaze INTRA

Introducing Oxford Glaze INTRA.
Light cure varnish for provisional crowns and bridges.



Highly esthetic and shiny surface without polishing!

Oxford Glaze INTRA is a single component light cure varnish for use with temporary crown and bridges. It has been formulated to eliminate the smear layer and leave a high gloss. The application of Oxford Glaze INTRA is fast and with less time and effort in comparison to mechanical polishing of the appliance. The deposition of food rests and plaque is reduced which can be advantageous for patients.

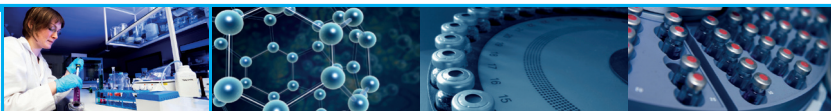
Features and Benefits

Features

- Perfect shine without polishing
- Light cure
- Optimal flow properties
- Improved wear resistance
- Can be used to repair temporaries
- Free of methylmethacrylate

Benefits

- Saves time
- Less effort
- Highly esthetic
- Hinders plaque formation
- Faster and convenient
- Easy application
- Durability
- Versatile
- Excellent biocompatibility



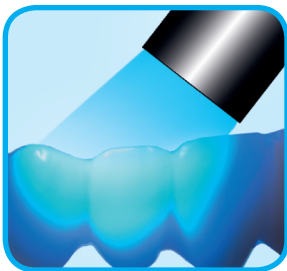
Oxford Glaze INTRA

Oxford Glaze INTRA

Oxford Glaze INTRA: Easy application!



Application of
Oxford Glaze INTRA

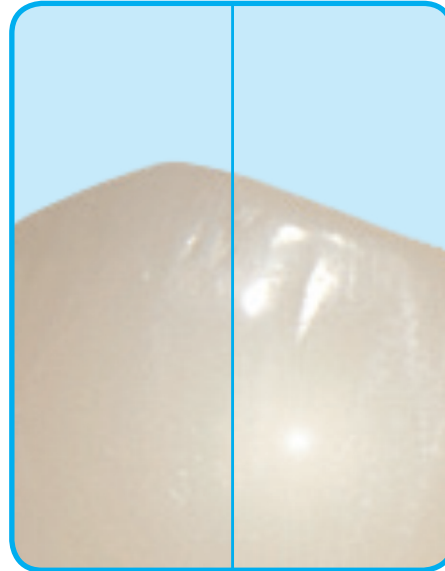


Light cure



Perfect gloss with
Oxford Glaze INTRA

Oxford Glaze INTRA: Perfect result!



before

after

Perfect application with: Oxford Temp, esthetic and reliable temporary crown and bridge material

Ordering Information

Oxford Glaze INTRA, light cure varnish for provisional crowns and bridges

Part Number	Article
-------------	---------

39-001	5 ml Oxford Glaze INTRA bottle
--------	--------------------------------

* These references are available on demand.

Error and omissions excluded. The Oxford Scientific products are only to be used by dentists and for its intended use. Please read these instructions for use carefully

Space for you

 Oxford Scientific

Made in Germany by First Scientific Dental Materials GmbH